

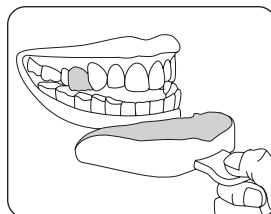
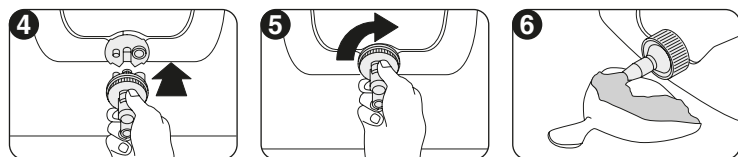
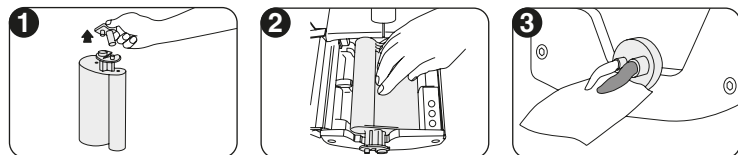
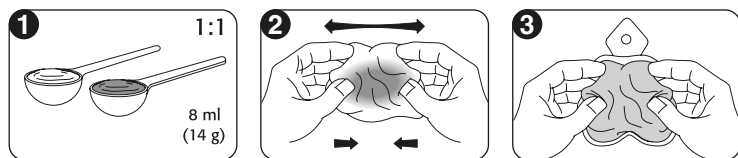
- DE** Gebrauchsanweisung
- EN** Instructions for use
- FR** Mode d'emploi
- ES** Instrucciones de uso
- IT** Istruzioni per l'uso
- NL** Gebruiksaanwijzing

REV 01/2021

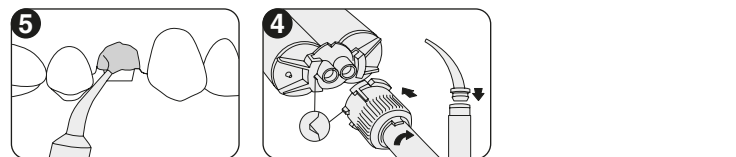
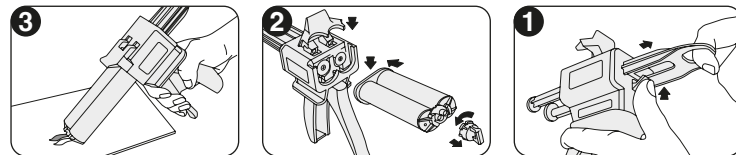
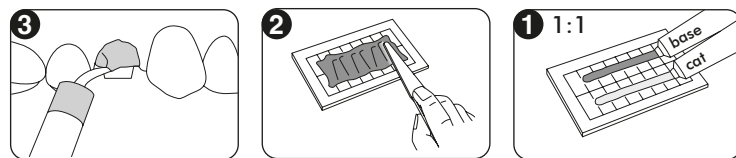
MD

- DE** Medizinprodukt
- EN** Medical Device
- FR** Dispositif médical
- ES** Producto sanitario
- IT** Dispositivo medico
- NL** Medisch hulpmiddel

Müller-Omicron GmbH & Co. KG
 Schlosserstraße 1
 D-51789 Lindlar
 Germany
 ☎ +49 (0) 2266-47420
 ☎ +49 (0) 2266-474223
 E-Mail: info@mueller-omicron.de
 www.mueller-omicron.de
 www.mueller-omicron.com



Made in Germany



EN Instruction for use

Elastomeric precision impression material on polyvinyl siloxane basis, addition-curing.

Thank you for the confidence you have shown in our company. You have made the right decision with the DC A-Silicone / DC A-Correctur NF impression system. Please always read these instructions for use through carefully before using the product! DC A-Silicone / DC A-Correctur NF products are only intended for use in dental applications by correspondingly qualified professionals. The medical device must be employed responsibly and with due caution.

Product description

DC A-Silicone / DC A-Correctur NF is an impression material that meets the highest demands. The putty wash materials provide very high thixotropism, outstanding resilience and hydrophilic properties. All DC A-Silicone / DC A-Correctur NF materials have a thermoactivating formulation which offers the user a variable processing time and thus the greatest processing comfort. The time in mouth is patient-friendly as it is always equally short. The system is rounded off by the highly contrasting colour system and the pleasant mild mint flavour.

Indication

Crowns and bridges, partial crowns, inlays, onlays, implants, transfer impressions.

Impression technique

- **DC A-Silicone putty NF:** Preliminary impression material for the putty wash technique (2-step), situation impressions
- **DC A-Silicone 5:1 putty soft / DC A-Silicone putty soft NF:** Basic material for the double mixing technique (1-step); situation impression.
- **DC A-Correctur regular NF / DC A-Correctur light fast NF:** wash material for putty-wash technique and double mixing technique

Dosage / processing: DC A-Silicone putty NF material for manual mixing applications

Remove the required amount of DC A-Silicone putty NF with the respective measuring spoon in a mass ratio of 1:1 of the catalyst and base. Combine the two components, draw the putty out to form a small strand, then fold it together again and knead it with your fingertips. Repeat this process a few times until you achieve a homogeneous colour, but always complying with the minimum mixing time of 30 seconds. Close containers tightly immediately after use. Do not interchange the lids and measuring spoons.

DC A-Silicone putty soft in a 5:1 full cartridge system

The 5:1 full cartridges are suitable for use in all common mixers for 5:1 cartridge systems. Remove the end cap from the 5:1 full cartridge by gently pushing the tab upwards. When doing so, hold the cartridge with the openings facing upward. Do not drop the cartridge, as it can break and be rendered unusable. Insert the 5:1 cartridge into the device (please follow the manufacturer's instructions on using the device). Then start the device and let material flow out until material is flowing evenly from both openings. Now place the mixing tip (single-use) over the openings and check that it is positioned correctly. Then push the fix cap as far as it will go over the mixing tip and turn it to the right until it locks in place. Start the mixer again and dispense the desired quantity of material into an impression tray. The used mixing tip remains on the cartridge and serves as a cap. Prior to the next use, loosen and remove the fix cap and remove the used mixing tip, check the opening for a plug that forms in isolated cases, clean if necessary and proceed as usual.

DC A-Correctur NF materials in 50ml safety cartridges

Insert the cartridge in the 1:1 mixing gun, remove the end cap and dispense material until material is flowing evenly from both openings. Now place the mixing tip (single-use) over the openings (ensure that the colour code of the end cap

and mixing tip are identical) and ensure that it is positioned correctly. To close it, turn the tip 90° clockwise. If necessary, use an intraoral tip (single-use). Operate the mixing gun again and dispense material in the desired amount. The used mixing tip remains on the cartridge and serves as a cap. Prior to the next use, remove the used mixing tip, check the opening for a plug that forms in isolated cases, clean if necessary and proceed as usual.

Impression procedure

When using a suitable tray adhesive, please follow the manufacturer's instructions for use. After inserting the tray with the DC A-Silicone / DC A-Correctur NF into the patient's mouth, press it into place briefly and then hold in place until fully cured. Always check the material intraorally to assess the degree of curing. When using the putty-wash technique (2-step), the first impression must be cleaned and dried in order to ensure cross-linking with the wash material.

Disinfection

The impressions can be disinfected with 2 % glutaraldehyde solution. After removing the impression from the mouth, rinse it under running water for 15 seconds. Then disinfect the impression by immersing it in the disinfectant thoroughly. Observing the disinfectant manufacturer's specifications is essential. Further information can be found at www.dgzmk.de, and in J. Prosthet. Dent. 1999 May, 81(5), 621.

Electroplating

The impressions can be electroplated with copper or silver in the usual baths.

Model fabrication

The impression can be poured after only 60 minutes. There are no other time restrictions. All class 3 and 4 gypsums that comply with ISO 6873, e.g., Moldano, Kulzer (Type 3) and Fujirock EP, GC (Type 4), can be used. Undamaged impressions can be poured several times.

Working and safety instructions

The products described above must only be used in accordance with their instructions for use. The

user has sole liability for any other use which contravenes these instructions for use.

- Close containers and tubes tightly immediately after use and do not interchange the lids and measuring spoons.
- Products marked "single use" are intended for a single use. To avoid cross-contamination, disinfect cartridges and mixing guns before the next use.
- Solutions used prior to impression taking, such as mouth rinses or retraction solutions, may interfere with the setting reaction and must be removed thoroughly.
- Contact between the material and certain types of gloves, e.g. latex gloves, should be avoided as the catalyst can be damaged. We recommend vinyl or nitril / vinyl or PE-based gloves.
- Do not leave any impression material residues in the oral cavity.
- Avoid contact with clothing, as cross-linked silicones are chemically resistant and leave stains which cannot be removed.
- Do not use DC A-Silicone / DC A-Correctur NF products with polyether, polysulphides or condensationcuring silicones.
- To prevent possible incompatibilities, do not combine DC A-Silicone / DC A-Correctur NF products with A silicones from other manufacturers.
- Storage: Store in a dry place at between 5°C and 27°C (41°F and 80.6°F).
- Shelf life: See date printed on package / label. Do not use after the expiry date.
- Processing temperature: room temperature between 18°C and 25°C (64.4°F to 77°F).

Contraindication:

The product must not be used in patients with known allergies to flavourings or other ingredients (see safety data sheet or ask the manufacturer). This should be clarified before use!

Warnings

- **Eye contact:** Avoid contact with eyes. In case of contact, rinse eyes immediately with plenty of clean water and consult an ophthalmologist without delay.
- **Swallowing:** after swallowing, rinse out the mouth and drink plenty of water. Always contact a doctor.
- **allergic reactions:** It is not possible to rule out allergic reactions in hypersensitive people. If acute allergic reactions should occur during the treatment, treatment with the product should be stopped immediately and a doctor should be consulted.

Should a serious incident occur unexpectedly in connection with this medical device, it must be reported to the manufacturer and the competent authority in your Member State. Please also observe the warnings in the safety data sheet! Information at www.mueller-omicron.com Errors and omissions excepted.

Please also observe the warnings in the safety data sheet!

Information at www.dental-central.de.

Errors and omissions excepted.

Technical data	DC A-Silicone Putty NF DC A-Silicone Putty soft NF	DC A-Silicone 5:1 putty soft	DC A-Correctur light fast NF DC A-Correctur regular NF
Consistency / EN ISO 4823	Kneadable / Type 0	Kneadable / Type 0	Light bodied / Type 3
Colour	Light green / blue	Blue	Pink
Dosage (1:1) / mixing time Dosage (5:1) / mixing time	30 sec. -	- automatic	automatic -
Variable working time including mixing time	up to 2 min.	up to 2 Min.	up to 2 min. up to 1 min. (fast set)
Time in mouth	≥ 2	≥ 2 Min.	≥ 2 (fast set)
Total setting time	4 min.	4 Min.	4 min. 2 min. (fast set)
Deformation under pressure (approx.)	2 %	2,5 %	3 %
Recovery from deformation (approx.)	99,4 %	99,5 %	99,6 %
Linear dimensional change (approx.)	0,2 %	0,2 %	0,16 %
Flavour	mint	Mint	mint

* at 23 °C / 73.4 °F. The time specifications in the upper table relate to a relative humidity of 50 +/- 10 %. In general, higher temperatures accelerate while lower temperatures delay the setting.