

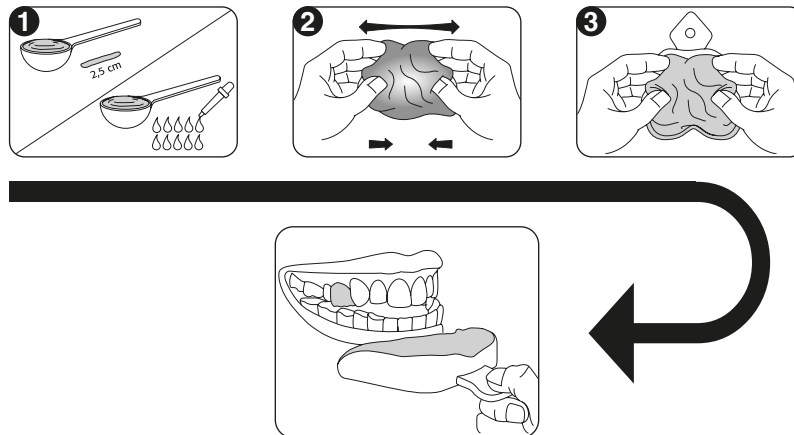
DC Knetmasse soft

- de **Gebrauchsanweisung**
- en **Instructions for use**
- fr **Mode d'emploi**
- es **Instrucciones de uso**

MD

- de **Medizinprodukt**
- en **Medical Device**
- fr **Dispositif médical**
- es **Producto sanitario**

REV 01/2022



en Instruction for use

Elastomeric precision impression material on polysiloxane basis, condensation-curing.

Thank you for the confidence you have shown in our company. You have made the right decision with the DC Putty soft. Please be sure to read these instructions for use through carefully before starting to use the product! DC Putty soft is products are only intended for use in dental applications by correspondingly qualified professionals. The medical device must be employed responsibly and with due caution.

Product description:

DC Putty soft is a precise dental impression material on a C-silicone basis with an outstanding price-performance ratio which satisfies the highest demands.

DC Putty soft is made from carefully selected raw materials with state-of-the-art production technology in Germany.

Indication:

Crowns and bridges, partial crowns, inlays, onlays, complete and partial dentures.

Impression technique:

- Basic material for the double mixing technique (1-step) and putty-wash technique (2-step)

Dosage / processing: (see also Dosage table 2)

- Dosage with DC Paste Hardener: Remove the required quantity of putty and catalyst in the correct dosage ratio as shown in the illustration. Draw out the putty and catalyst to create a small strand, then fold it together again and knead it with your fingertips. Repeat this process a few times until you achieve a homogeneous colour, but always complying with the minimum mixing time of 30 seconds. Close containers and tubes again immediately after use!

- Dosage with DC Liquid Hardener: Spread 10 drops of liquid hardener across a measuring spoon of putty and continue to process in the same way as when mixing with paste hardener.

Mixing ratio:

Adding too much or too little DC Paste Hardener/DC Liquid Hardener can affect the total setting time. As a general rule, adding more catalyst results in a faster setting time, whereas less catalyst slows it down. It is possible to increase or reduce the amount of DC Paste Hardener/DC Liquid Hardener by +/- 25%.

Impression procedure:

When using a suitable tray adhesive, please follow the manufacturer's instructions for use. After inserting the tray with the DC Putty soft into the patient's mouth, press it into place briefly and then hold in place until fully cured. Always check the material intraorally to assess the degree of curing. When using the putty-wash technique (2-step), the first impression must be cleaned and dried in order to ensure cross-linking with the wash material.

Disinfection:

The impressions can be disinfected with a 2% glutaraldehyde solution. After removing the impression from the mouth, rinse it under running water for 15 seconds. Then disinfect the impression by immersing it in the disinfectant thoroughly. Observing the disinfectant manufacturer's specifications is essential.

Further information can be found at www.dgzmk.de, and in J. Prosth. Dent. 1999 May, 81(5), 621.

Electroplating:

The impressions can be electroplated with copper or silver in standard baths.

Model fabrication:

The impression can be poured after just 30 mins and for up to 7 days. All class 3 and 4

gypsums which comply with the requirements in ISO 6873, e.g., Moldano, Kulzer (Type 3) and Fujirock EP GC (Type 4), can be used. Undamaged impressions can be poured several times.

Working and safety instructions:

The products described above must only be used in accordance with their instructions for use. The user has sole liability for any other use which contravenes these instructions for use.

- Close containers and tubes tightly immediately after use and do not interchange the lids and measuring spoons.
- Solutions used prior to impression taking, such as mouth rinses or retraction solutions, must be removed thoroughly.
- Do not leave any impression material residues in the oral cavity.
- Avoid contact with clothing, as cross-linked silicones are chemically resistant and leave stains which cannot be removed.
- Do not use DC Putty soft with polyether, polysulphides or addition-curing silicones.
- To prevent possible incompatibilities, do not combine DC Putty soft with C-silicones from other manufacturers.
- Storage: Store in a dry place at between 5°C and 27°C (41°F and 80.6°F).
- Shelf life: See date printed on package/label. Do not use after expiry date.
- Processing temperature: Room temperature between 18°C and 25°C (64.4°F to 77°F).

Contraindication:

The product must not be used in patients with known allergies to flavourings or other ingredients (see safety data sheet or ask the manufacturer). This should be clarified before use!

Warnings for DC Paste Hardener / DC Liquid Hardener:

- Inhalation: Take person out into the fresh air, administer oxygen if necessary.

- Contact with skin: Avoid prolonged contact with the skin. Following contact, wash the skin thoroughly with soap and water. We recommend wearing suitable protective clothing and gloves.

General warnings:

- Eye contact: Avoid contact with eyes. In case of contact, rinse eyes immediately with plenty of clean water and consult an ophthalmologist without delay.
- Swallowing: If swallowed, rinse out the mouth and drink plenty of water. Always contact a doctor.
- Allergic reactions: It is not possible to rule out allergic reactions in hypersensitive people. If acute allergic reactions should occur during the treatment, treatment with the product should be stopped immediately and a doctor should be consulted. In case of known allergies, we generally recommend taking the impression with an A-silicone, e.g., DC A-Silicone

Should a serious incident occur unexpectedly in connection with this medical device, it must be reported to the manufacturer and the competent authority in your Member State.

Please also observe the warnings in the safety data sheet!

Information at www.dental-central.de

Errors and omissions are excluded.

Technical data and product features




Table 1:

Technical data	DC Putty soft	Technical data	DC Putty soft
Consistency / EN ISO 4823	Kneadable / Type 0	Deformation under pressure (approx.)	2,0 %
Colour	White	Recovery from deformation (approx.)	98,8 %
Mixing time	30 sec.		
Working time incl. mixing time*	1 min. 45 sec.	Linear dimensional change (approx.)	0,20 %
Time in mouth	≥ 4 min.	Flavour	mint
Total setting time	5 min. 45 sec.	Hardness Shore	A 60

* At 23°C / 73.4°F. The times specified in the table above are based on a relative humidity of 50 +/- 10%. As a general rule: higher temperatures accelerate setting and lower temperatures delay it.

Dosage table

Table 2:

	DC Paste Hardener	DC Liquid Hardener
DC Putty soft  1 ≈ 12 ml (22,4g)	2,5*  ≈ 0,53 (0,5g)	10  ≈ 0,24 (0,24g)
* 1 mixing block measuring unit = 1 cm (0.39 inches)		